

Normal

Trichiasis



Stages of trachoma



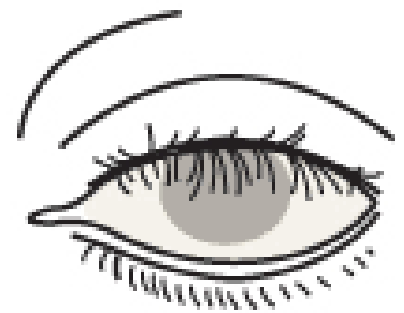
1.

Infection caused by Chlamydia bacterium causes inflammation and thickens the upper eyelid



2.

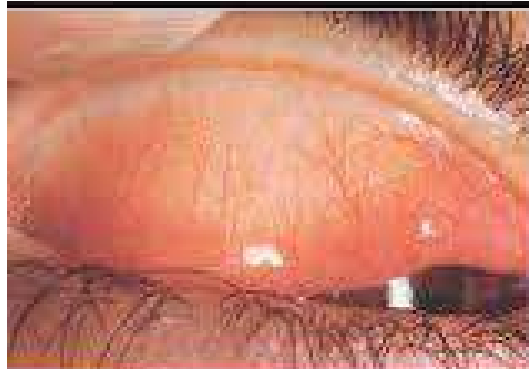
Scarring of the eyelid pulls the eyelashes into the eye



3.

The eyelashes scratch the cornea and continue to infect and damage the eye, which can lead to blindness



Stage**Description**

N:
Normal Tarsal
Conjunctiva

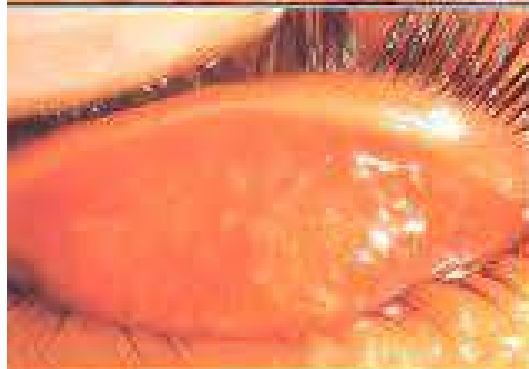
For examination, the upper eyelid is turned over (everted).

Notice the large deep-lying blood vessels that mainly run vertically.



TF:
Trachomatous
inflammation – Follicular

Presence of 5 or more follicles in the upper tarsal conjunctiva, each at least 0.5 mm in size.



TI:
Trachomatous
inflammation – Intense

Pronounced inflammatory thickening of the upper tarsal conjunctiva, which obscures more than one half of the normal tarsal vessels.



TS:
Trachomatous Scarring

The presence of easily visible white lines, bands, or sheets in the tarsal conjunctiva. Scarring may obscure the tarsal vessels.



TT:
Trachomatous Trichiasis

At least 1 eyelash that rubs the globe or evidence of recently removed in-turned lash (*epilation*).



CO:
Corneal Opacity

The presence of an easily visible corneal opacity that obscures at least part of the pupillary margin.